

AirForce® 40i

240-Volt Portable Air Plasma Cutter



272165
March 2018

240 V



500566

Quick Specs

Rated Output
40 A at 140 VDC, 50% duty cycle

Mild Steel Cutting Capacity
Rated: 5/8 in. (15.9 mm)
Max. Cut: 7/8 in. (22 mm)

DC 1 Phase

5/3/1
INDUSTRIAL
WARRANTY

Powerful performance in a lightweight package.

With up to 40 amps of power, the Airforce 40i can clean cut 5/8-inch and sever cut 7/8-inch steel. It runs on 240-volt power so it's excellent for light and heavy industrial users. Weighing less than 31 pounds, it's easy to transport from one job to another. Setup is easy too; quickly adjust the amperage on the front of the machine with the single knob design.

Applications

- Maintenance
- Prototyping
- Light construction
- Body shops
- Fabrication

Includes

- 12 ft. (3.7 m) XT40R hand-held torch
- 12 ft. (3.7 m) work cable with clamp
- 10 ft. (3 m) power cord with plug
- Easy-to-connect, built-in gas/air filter and regulator for extra protection
- Extra consumables (2 tips, shield deflector, and electrode)

Features	Benefits
XT40R torch	Designed for increased comfort with an ergonomic trigger safety, more efficient cooling and economical replacement cutting tips.
Pilot arc controller	Allows you to cut expanded/perforated metals, as well as painted or coated surfaces, without retriggering the torch.
Wind Tunnel Technology™	Prevents abrasive dust and particles from damaging internal components.
Fan-On-Demand™	Cooling system operates only when needed reducing power consumption and contaminants drawn into the machine.
Power factor correction (PFC) circuitry	Draws up to 30% less amperage for the same cutting range as compared to the competition. PFC expands operators work area via extension cord, while minimizing nuisance circuit breaker trips caused by voltage drops.
LVC™ line voltage compensation	Provides peak performance power under variable input voltage conditions (±15%) for steady and cleaner-ending cuts.
Internal gas/air filter and regulator	Controls amount of usage and flow of air or gas.
Starts without high frequency	Protects unit by not interfering with or damaging controls or computers.
Diagnostic lights	LED lights for quick troubleshooting of pressure, power and cup situations.
Postflow cooling circuit	Extends life of consumables and torch by cooling them with postflow air after trigger is released.
Compatible with engine-driven welders	Complete cutting capability when powered by an engine-driven welder/generator with a 240 V receptacle of 8 kW or more.
Hobart 5/3/1 industrial warranty	Five-year warranty on transformers, stabilizers and main rectifiers; three years on generators, PC boards and drive systems; and one year on guns (MIG, plasma and TIG torches).



Hobart Welding Products

An ITW Welding Company
Sales: 800-626-9420
Service: 800-332-3281

HobartWelders.com



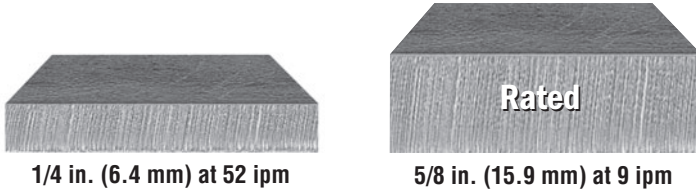
Specifications (Subject to change without notice.)



Rated Output	Amps Input at Rated Output, 50/60 Hz				Max. Open Circuit Voltage	Plasma Gas Flow/Pressure	Dimensions (H x W x D)	Net Weight with Torch
	208 V	230 V	KVA	KW				
40 A at 140 VDC, 50% duty cycle	33	30	6.8	6.6	400 VDC	4.8 cfm (136 L/min) at 90–120 psi (621–827 kPa) recommended	11.25 x 8.25 x 14.25 in. (286 x 210 x 362 mm)	30.6 lb. (13.9 kg)

Certified by Canadian Standards Association to both the Canadian and U.S. Standards.

Mild Steel Cutting Capacity (Thickness to scale.)



Note: Recommended maximum piercing capacity for hand-held applications is 3/16 in. (4.8 mm). Maximum sever cut of 7/8 in. (22 mm). For aluminum and other metals with high thermal conductivity, cutting capabilities will be derated as much as 30%.

Maximum Cutting Speeds at 40 Amps Output

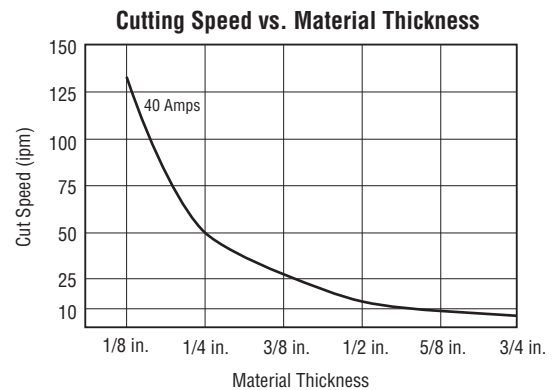
Thickness	Approximate Travel Speeds*
1/8 in. (3.2 mm)	130 ipm (3,292 mm/min.)
1/4 in. (6.4 mm)	52 ipm (1,321 mm/min.)
3/8 in. (9.5 mm)	28 ipm (711 mm/min.)
1/2 in. (12.7 mm)	14 ipm (345 mm/min.)
5/8 in. (15.9 mm)	9 ipm (224 mm/min.)
3/4 in. (19.1 mm)	6 ipm (163 mm/min.)

* Travel speeds are approximately 80% of maximum.

Cutting Performance

To determine the maximum rated cutting thickness of mild steel, follow the line from the 10 ipm (inches per minute) point on the cutting chart. The point at which this line intersects the cutting curve determines the maximum recommended production cutting thickness of the unit.

Note: The rating is based on 10 ipm because this is the minimum speed at which the operator achieves a smooth, steady cut when using a hand-held torch.



Accessories



XT40R Replacement Torch 268923
12 ft. (3.7 m)



Protective Cover 770771
Weather-resistant nylon resists stains and mildew while protecting the finish of your plasma cutter.



Shade 5.0 Safety Glasses
770726 Mirrored lens with black frame
770727 Black lens with orange frame
Stylish protection that meets ANSI Z87.1 standards.

The following accessories are available through Miller/Hobart Service Distributors.



Plasma Standoff Roller Guide 253054
Helps maintain recommended standoff distance to maximize cutting performance and improve tip life.



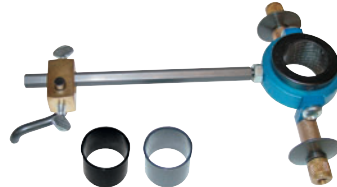
In-Line Air Filter Kit 228926
Mounts to the back of the AirForce® 27i and 40i. Includes male and female 1/4-inch NPT quick disconnect fittings and hose for easy on/off connection. The replaceable filter element filters to .85 microns.

In-Line Air Filter Replacement Element 228928
Includes one replacement filter for in-line filter kit **228926**.



Full KVA Adapter Cord 300517
NEMA 14-50P to NEMA 6-50R. Adapts engine drive 120/240-volt plug to common AirForce 240-volt plug.

230-Volt Extension Cord 770644
20-foot (6.1 m) NEMA 6-50P to NEMA 6-50R heavy-duty extension cord. 8-gauge cord has lighted ends that show power is on and a molded integrated strain relief.

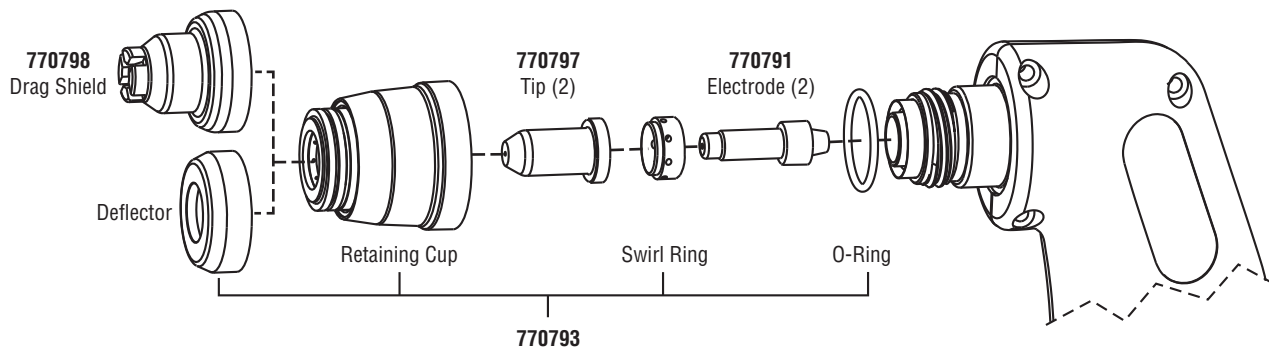


Plasma Circle-Cutting Guide 253055
Cut straight lines or circles up to 12-inch diameter with ease.



Suction/Magnetic Pivot Base 195979
Add this to your cutting guide for convenient attachment to all flat surfaces. The extended arm accommodates holes up to 30-inch diameter.

Torch Consumables (Order from Hobart Service Parts.)



HobartWelders.com



© 2018 Hobart and the Hobart logo are trademarks of Illinois Tool Works, Inc.

